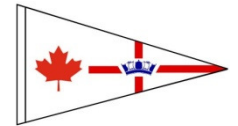


**2017 CANADIAN FORCES SAILING ASSOCIATION  
ANNUAL REGATTA  
SAT SEPTEMBER 30 – SUN OCTOBER 1  
ESQUIMALT, BC**



## **SAILING INSTRUCTIONS**

**This regatta is a designated Vancouver Island Racing Series (VIRS) event and results will count towards the 2017 Vancouver Island Racing Series**

### **1 RULES**

The Regatta will be governed by the:

- Rules as defined in the Racing Rules of Sailing (RRS)
- Prescriptions of Sail Canada
- Class rules of any Division sailing One Design
- PHRF BC handicap rules for any Division sailing PHRF
- Pacific International Yacht Racing Association (PIYA)
- The Sailing Instructions and any amendments

### **2 NOTICES TO COMPETITORS, COMPETITORS MEETING**

- 2.1** Notices to competitors will be posted on the Official Notice Board (ONB) located under the Club House sundeck. Race results will be posted on a notice board inside the Club House.
- 2.2** There will be a Competitors' Meeting on Saturday, September 30 at 0900 on the foreshore.

### **3 CHANGES TO SAILING INSTRUCTIONS**

Any change to the Sailing Instructions will be posted before 0830 on the day it will take effect, except that any change to the schedule of races will be posted by 2000 on the day before it will take effect.

### **4 SIGNALS MADE ASHORE**

- 4.1** Signals made ashore will be displayed from the mast hoisting crane located adjacent to the ramp leading to the docks.
- 4.2** When flag AP is displayed ashore, "1 minute" is replaced with "not less than 45 minutes" in the Race Signal AP.

### **5 SCHEDULE OF RACES**

- 5.1** Dates of racing: Saturday September 30 and Sunday October 1, 2017.
- 5.2** Warning Signal for the first race each day will be 0955.
- 5.3** All other divisions will start five (5) minutes after the successful start of the previous division.
- 5.4** Order of starts for the first race of each day:  
PHRF DIV 1  
PHRF DIV 2  
PHRF DIV 3 (If fewer than 5 Division 3 boats, Division 3 will start with Division 2)  
Melges 24  
Martin 242  
One Design 3 (if required)
- 5.5** Subsequent starts may be in any order and will be announced on VHF Channel 09 as well as designated by the class Warning Signal. Failure to hear this announcement is not grounds for redress.
- 5.6** Boats that have either finished or withdrawn from a race are advised to proceed directly to the starting area for the next race.
- 5.7** On Sunday October 1 no Warning Signal will be made after 1500.

### **6 DIVISIONS / CLASS FLAGS**

- 6.1** The Divisions described in paragraph 6.3 below are proposed; however, the Race Committee may adjust the number of divisions and the division splits after all entries have been received. Division splits will be announced at the Competitors' Meeting, 0900 on Saturday September 30.
- 6.2** A One Design Class must have four or more registered boats for an individual start.

## 6 DIVISIONS / CLASS FLAGS cont'd

6.3 Division/Class flags are assigned as follows:

Division	Flag / Warning Signal
PHRF 1 (158 or less)	Numeral Pennant 1
PHRF 2 (159 to 194)	Numeral Pennant 2
PHRF 3 (195 and higher)	Numeral Pennant 3
Melges 24	Melges 24 Class Flag
Martin 242	Martin 242 Class Flag
One Design 3 (if required)	TBD

## 7 RACING AREA (ATTACHMENT A)

Racing will consist of a series of races, in Esquimalt Harbour, and the Victoria waterfront from Albert Head to Victoria Harbour. Courses will be set in a format and distance appropriate to each division or one-design class. Competitors are strongly advised to check the appropriate charts for navigational hazards.

## 8 THE COURSES (ATTACHMENTS A and B)

### 8.1 PHRF COURSES

(a) **ATTACHMENT A** courses shows the method of indicating the courses to be sailed. No later than the Warning Signal, the Signal Boat will display the selected course marks on a board and will attempt to announce the division and course marks on VHF Channel 09.

(b) If the start of Divisions 2 and 3 are combined into one start, (SI 5.4) there will be a course announced for each division.

Example: DIV 2 (s) C, S, F, R, (f)  
DIV 3 (s) C, F, R, (f)

**ATTACHMENT A** chart shows the approximate location of the marks.

### 8.2 ONE DESIGN COURSES

See **ATTACHMENT B**.

## 9 MARKS (ATTACHMENTS A and B)

9.1 Marks will be navigation beacons and buoys, dropped marks or mooring buoys.

PHRF dropped Marks: C, R and S are orange inflatables. Refer to **ATTACHMENT A** for all marks.

ONE DESIGN Marks: 1 and 2 are yellow inflatables. Refer to **ATTACHMENT B** for details.

9.2 A change mark for One Design, placed in accordance with Rule 33, will be a yellow inflatable with a black band.

9.3 The starting marks will be the Signal Boat at the starboard end and the Pin Boat at the port end.

9.4 Finish marks for PHRF, see 13.2.

9.5 Finish marks for One Design, see **ATTACHMENT B**.

## 10 CHANGE OF THE NEXT LEG OF THE COURSE

10.1 To change the next leg of the One Design course, the Race Committee will lay a new mark (or move the finishing line) and remove the original mark as soon as practicable. When in a subsequent change a new mark is replaced, it will be replaced by an original mark.

10.2 Except at a gate, boats shall pass between the Race Committee boat signalling the change of the next leg and the nearby mark leaving the mark to port and the Race Committee boat to starboard. This changes Rule 28.

## 11 AREAS THAT ARE OBSTRUCTIONS

11.1 The Department of National Defence Port Security is responsible for security in Esquimalt Harbour. All vessels entering Esquimalt Harbour are requested to contact Queen's Harbour Master (QHM) OPS (during normal working hours) or MARPAC Joint Operations Centre (JOC) during silent hours including weekends. Calls are to be made on VHF Channel 10 or by telephone at 250-363-5310. Vessels should state their destination as CFSA and proceed directly to the CFSA docks. During the feeder race and the regatta, the Race Committee will assume responsibility for advising QHM/JOC of vessel activity involving race participants only.

11.2 Racers are advised that they are not permitted within 300 feet (100 yards) of any Naval vessel.

11.3 Scroggs Rock beacon near the SE approaches to Esquimalt Harbour shall be left to Port when departing and to Starboard when entering Esquimalt Harbour.

## 12 THE START

12.1 Races will be started in accordance with RRS 26 with the Warning Signal made 5 minutes before the Starting Signal.

12.2 The Starting Line will be between staffs displaying orange flags on the Signal Boat and the Pin Boat.

12.3 Boats whose Warning Signal has not been made shall keep clear of the starting area.

12.4 The Warning Signal for each succeeding division shall be made with or after the Starting Signal of the preceding division. (Ref: SI 6 for the flag designation).

## **12 THE START cont'd**

- 12.5** If any part of a boat's hull, crew or equipment is on the course side of the starting line during the minute before her starting signal and she is identified, the Race Committee will attempt to broadcast her sail number on VHF Channel 09. Failure to make a broadcast or to time it accurately will not be grounds for a request for redress. This changes Rule 62.1(a).
- 12.6** If flag U has been displayed as the Preparatory Signal, no part of a boat's hull, crew or equipment shall be in the triangle formed by the ends of the starting line and the first mark during the last minute before her Starting Signal. If a boat breaks this rule and is identified, she shall be disqualified without a hearing but not if the race is restarted or resailed or postponed or abandoned before the Starting Signal. This changes Rule 26.

## **13 THE FINISH**

- 13.1** All finishes will be downwind; exception, Shortened Course.
- 13.2** PHRF will have a separate finish line. The Finishing Line will be between a staff displaying a blue flag on the finish boat and a yellow buoy. The finishing marks will be the finish boat and the yellow buoy – see **ATTACHMENT A**.
- 13.3** One Design Classes will finish at the start line - see **ATTACHMENT B**.
- 13.4** After half of a division has finished, stragglers may be finished on course either at a mark or on a leg of the course. This is at the discretion of the Race Committee and is not subject to protest. Boats finished on course shall not be scored ahead of boats that have completed the race.

## **14 PENALTY SYSTEM**

For this event, Rule 44.1 is changed so that the Two-Turns Penalty is replaced by the One-Turn Penalty.

## **15 TIME LIMITS AND TARGET TIMES**

The time limit for PHRF will be 2.5 hours.  
The target time for PHRF will be 90 minutes.  
The time limit for One Design will be 90 minutes.  
The target time for One Design will be 50 minutes.

## **16 PROTESTS AND REQUESTS FOR REDRESS**

- 16.1** Boats wishing to lodge a protest shall inform the Race Committee upon either finishing or withdrawing from the race concerned (this changes RRS 61.1).
- 16.2** Protest forms are available from the Protest Box located in the vicinity of the ONB (only one copy is necessary). Completed protest forms shall be filed in the Protest Box located in the vicinity of the ONB within the protest time limit.
- 16.3** For each division, the protest time limit is 60 minutes after the Race Committee Signal Boat docks. The docking and protest time limits will be posted on the ONB.
- 16.4** Notices will be posted within 30 minutes of the protest time limit to inform competitors of hearings in which they are parties or named as witnesses. Hearings will be held in the Training Trailer located in the lower parking lot.
- 16.5** Notices of protests by the Race Committee or Protest Committee will be posted to inform boats under Rule 61.1(b).

## **17 SCORING**

- 17.1** For PHRF Divisions, Time on Time scoring will be used.
- 17.2** For One Design Classes, order of finish will be used.
- 17.3** One race must be completed to constitute a series.  
(a) When fewer than 5 races have been completed, a boat's series score will be the total of her race scores.  
(b) When 5 or more races have been completed, a boat's series score will be the total of her race scores excluding her worst score.
- 17.4** This is a designated Vancouver Island Racing Series (VIRS) event, and as such, results will count towards the 2017 VIRS Trophies. VIRS scoring is provided by RVYC.

## **18 SAFETY REGULATIONS**

- 18.1** Boats racing in the PHRF divisions shall comply with the PIYA Safety Equipment Requirements (SER) **Nearshore** with the following modifications:  
*2.4.2 through 2.4.8 are: **Advisable – Lifejackets are to be worn at all times while on deck on boats that do not meet this requirement.***  
*2.4.4 the first sentence is modified to: **Lifelines SHALL be either coated or uncoated stainless steel wire or high molecular weight polyethylene (HMPE) line (see appendix- Lifelines for requirements).***  
*3.20 **Required** (non-electronic chart).*
- 18.2** Boats racing in the One-Design divisions shall comply with Class Rules.
- 18.3** A boat that retires from a race shall notify the Race Committee as soon as possible.
- 18.4** The Race Officer (RO) will be in charge of the overall safety on the water.

## **19 RADIO COMMUNICATION**

- 19.1** With the exception of 18.3 or in the case of an emergency, a boat shall neither make radio transmissions while racing nor receive radio communications not available to all boats. This restriction also applies to mobile telephones.
- 19.2** The Race Committee's working channel is VHF Channel 09.
- 19.3** Competitors are encouraged to monitor the starting sequence.

## **20 PRIZES**

- 20.1** Prizes will be awarded for 1st, 2nd and 3rd place in each division with at least 5 boats.  
1st and 2nd will be awarded for divisions with fewer than 5 boats.
- 20.2** An overall trophy may be awarded for the top overall boat based on score and fleet size.
- 20.3** The Interclub Challenge Trophy is awarded to the club having the best two-boat aggregate score.

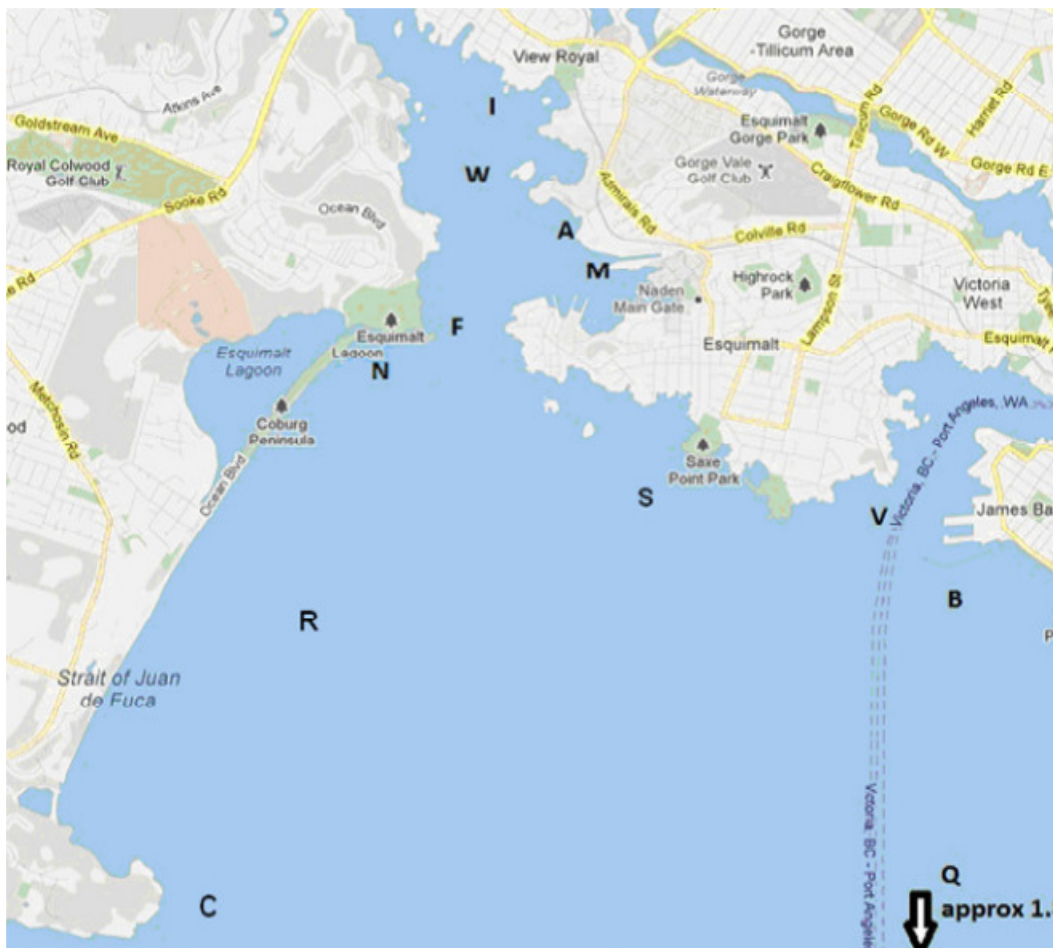
## **21 DISCLAIMER OF LIABILITY**

Competitors participate in the regatta entirely at their own risk. See RRS 4, Decision to Race.  
The Organizing Authority will not accept any liability for material damage or personal injury or death sustained in conjunction with or prior to, during, or after the regatta.

## **22 INSURANCE**

Each participating boat shall be insured with valid third-party liability insurance with a minimum coverage of \$1,000,000 for Canadian vessels, and at least \$350,000 per event or the equivalent for US vessels. Skippers must be prepared to show the insurance certificate if requested.

# ATTACHMENT A – PHRF CHART, MARKS AND COURSES



**MARKS** - The PHRF Course Mark letter designations are as follows:

- A** **Ashe Head** (yellow spherical buoy anchored near Ashe Head)
- B** **Brotchie Ledge** mark
- C** **Albert Head** (8-foot orange tetrahedron inflatable anchored at approx. 48° 23.220'N 123°28.000'W)
- F** **Fisgard Light Buoy** (V17)
- I** **Inskip** (most South (of 3) mooring can, NE of Whale Rock in Plumper Bay)
- M** **Munro Head** (large yellow spherical buoy anchored near east end of CFSA breakwater)
- N** **Navy** mooring can approximately .35 nm SW from Fisgard Light Buoy
- Q** **Quarantine Buoy** VH (Fairways)
- R** **Royal Roads** (8-foot orange tetrahedron inflatable anchored at approx. 48° 24.351'N 123° 27.609'W)
- S** **Saxe Point** (8-foot orange tetrahedron inflatable anchored off Saxe Point Park)
- V** **Victoria Harbour** (V21) (Green Buoy near Victoria harbour entrance)
- W** **Whale Rock Bifurcation Buoy**

**COURSES** - No later than the Warning Signal, the Signal Boat will display the selected course marks on a course board which will indicate all marks to be sailed.

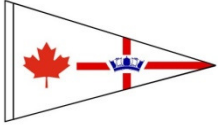

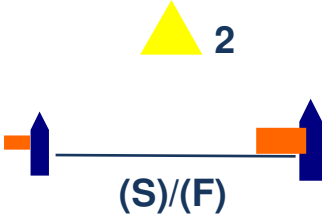
All marks are to be left to port UNLESS a Green Flag is flown above the course board. The Green Flag will indicate all marks shall be left to Starboard.

- Examples:** (Start), B, F, C, (Finish) (180 degrees 1.2 NM)  
 (Start), V, C, N, S, (Finish) (with green flag flown above course board)

**SEPARATE FINISH LINE** - depicted below



# ATTACHMENT B – ONE DESIGN COURSES

<b>WARNING/START</b> Class Flag      Warning @ 5 min Start @ 0 min ↑• ↓•		<b>PREPARATORY</b> <b>P</b> Preparatory 4 & 1 min to start ↑• ↓•		<b>I</b> Rule 30.1 in effect ↑• ↓•		<b>U</b> Refer to SI 12.6 ↑• ↓•		<b>BLACK</b> Rule 30.3 in effect ↑• ↓•	
<b>POSTPONEMENT</b> <b>AP</b> Races not started are postponed ↑•• ↓•				<b>AP over H</b> Races not started are postponed Further signals ashore ↑••		<b>AP over A</b> Races not started are postponed No more racing today ↑••		<b>OTHER</b> <b>L</b> <i>Afloat:</i> come within hail or follow boat <i>Ashore:</i> notice to competitors posted ↑•	
<b>RECALL</b> <b>X</b> Individual ↑•			<b>GENERAL</b> Warning 1 min after ↑•• ↓•			<b>SHORTEN COURSE</b> <b>S</b> Shortened Rule 32.2 in effect ↑••		<b>M</b> Object displaying this signal replaces a missing mark -----	
<b>CHANGING NEXT LEG</b> <b>C</b> Position of next mark changed -----				To Starboard To Port		-      Decrease length +      Increase length			
<b>N</b> All races that have started are abandoned Return to starting area Warning 1 min after ↑••• ↓•			<b>ABANDONMENT</b> <b>N over H</b> All races are abandoned Further signals ashore ↑•••			<b>N over A</b> All races are abandoned No more racing today ↑•••			
<h2 style="color: red;">COURSE ILLUSTRATION</h2>									
									
#	<b>COURSE</b>								
1	(S) - 1 - (F)								
2	(S) - 1 - 2 - 1 - (F)								
3	(S) - 1 - 2 - 1 - 2 - 1 - (F)								

(S) = START | 1 = WINDWARD MARK | 2 = LEEWARD MARK, MAY BE A GATE | (F) = FINISH

ALL MARKS SHALL BE LEFT TO PORT, WITH THE EXCEPTION OF A GATE

WHEN THERE IS A GATE, BOATS SHALL SAIL BETWEEN GATE MARKS FROM THE DIRECTION OF PREVIOUS MARK AND ROUND EITHER GATE MARK